



LX500

PRODUCT MANUAL



SAFETY

To ensure safe usage, read through the precautions below:

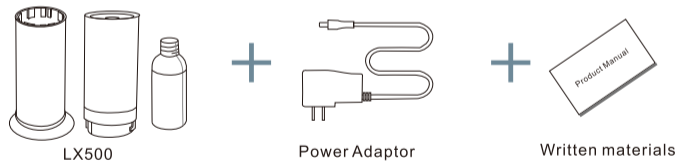
- The LX500 should always be used in an upright position. Do not tilt the LX500 as oil can spill inside the device and damage the mechanics.
- Use of the LX500 and aroma oils requires adult supervision.
- Do not wet the LX500 or place it near any liquids, sinks, bath tubs, or outdoors.
- Do not use the LX500 with any power cord other than the one provided with your LX500. Position the power cord to prevent it from being a tripping hazard.
- Before connecting your LX500 to a power outlet, check that the voltage label specified on the adapter is the same as the power supply.
- Do not run the unit on empty.
- Do not apply oils to skin. Keep oils out of contact with eyes. If contact occurs, flush with water immediately.
- Do not dilute the aroma oils with water.

BASIC PARAMETERS

1

| | |
|---------------|---------------|
| Model | LX500 |
| Dimensions | 109.4X32.6 in |
| Voltage | DC12V |
| Power | 3W |
| Coverage Area | 500 sq.ft |

EQUIPMENT CHECK

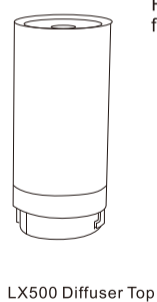
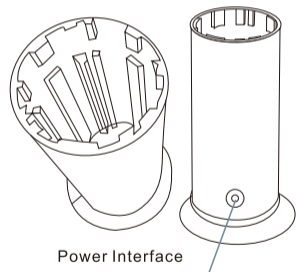


Please check to make sure that all the parts are present in the package. Upon opening the package, locate the device, a fragrance bottle, adapter, remote control, as well as a manual. If any of those are missing, please contact us immediately.

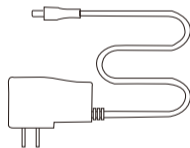
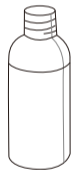
SETTING UP YOUR LX500

2

1. Open the box and take out all the parts



Fragrance bottle
for fragrance Oil



Power Adaptor

SETTING UP YOUR LX500

3

Figure 1

1. Screw the fragrance
bottle into the LX500
Diffuser.



Figure 2

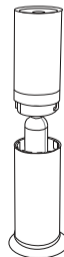


2. Turn the bottle counter clockwise.
NOTE: Keep the bottle vertical to
prevent any spillage.

Fixed fragrance bottle

3. Insert the LX500 Diffuser Top
with the secured fragrance oil
into the base. Rotate clockwise
until tight.

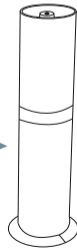
Figure 3

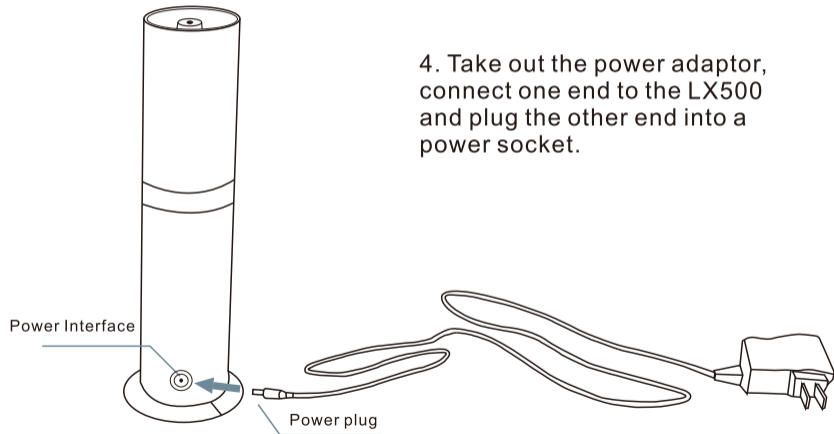


Put into the
bottom part
of LX500

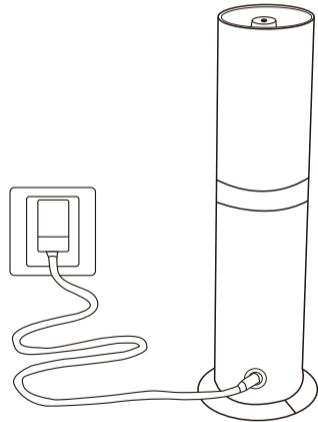


Figure 4





5. When the power is on, the light will turn blue.



HOW TO USE

6

1 Add Fragrance Oil :

Hold the upper and lower components of the LX500 in each hand and turn to separate the two. Next, unscrew the fragrance bottle from the upper component. Add at least an inch of fragrance oil into the bottle, and then screw it back onto the upper component. Make sure that the bottle is tightened before assembling the upper and lower components back together.

NOTE: Use only Brilliant Scents Fragrance Oils or Keep It Clean Solution. Do not dilute, modify, or mix fragrance oils.

2 Connect the Power Supply:

Take out the power adaptor, connect one end to the LX500 and plug the other end into a power socket.

3 Set Your Preference Using the Remote Control:

There are different settings for you to choose how you want the LX500 to give off the aroma, Refer to the next page for specific instructions.

The LED light gives off 3 colors:

Blue: Indicates the device is powered on

Green: Indicates the scent is being diffused

Red: Flashes when any button on the remote control is being pressed

REMOTE CONTROL SETTING

7



POWER: Turn the LX500 on or off.



AROMA: Reset all settings to default.



Low: 30s On / 120s Off



Med: 30s On / 60s Off



High: 30s On / 30s Off

4 Cold air diffuser working time

1h

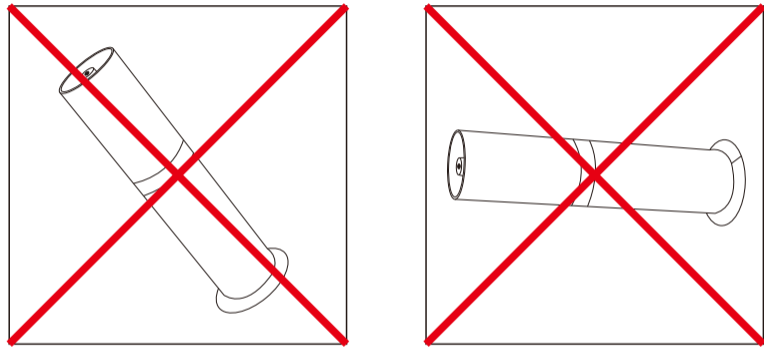
(1h): When the power is on, press this button to set the time the LX500 will be on for. In this case, the LX500 will be working for one hour then will turn off automatically.

4h

(4h): When the power is on, press this button to set the time the LX500 will be on for. In this case, the diffuser will be working for 4 hours then will turn off automatically.

8h

(8h): When the power is on, press this button to set the time the LX500 will be on for. In this case, the diffuser will be working for 8 hours then will turn off automatically.



After the LX500 is properly setup with fragrance oil already added into the fragrance bottle, keep the LX500 standing vertically. Do not tilt or lay it down to avoid unnecessary oil spillage. Any spillage will contaminate the circuit and may damage the LX500.

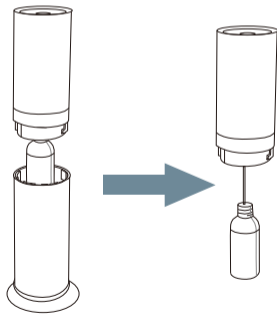
MAINTENANCE

10

For optimal performance, clean the diffuser with Keep it Clean Solution after 50 hours of use, or when you want to change the scent of your fragrance oil.

NOTE: Clean the LX500 only with Keep it Clean Solution.

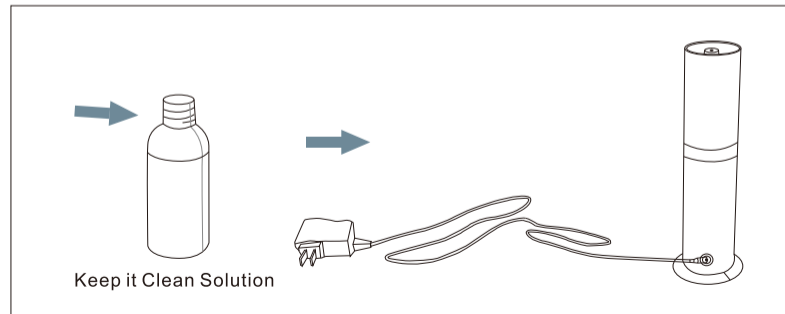
1. Separate the top and bottom components and unscrew the fragrance bottle carefully.



MAINTENANCE

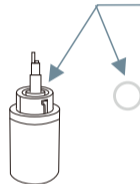
11

2. Fill the empty fragrance bottle with Keep it Clean Solution to the second line from the bottom.
3. Screw the Keep it Clean Solution into the LX500.
4. Run the LX500 for 5-10 minutes to ensure the Keep it Clean Solution can filter through the whole LX500.
5. After cleaning, turn off the LX500 and add your choice of fragrance oil into the fragrance bottle.

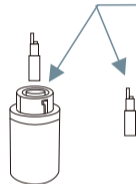


| ISSUE | POSSIBLE EXPLANATIONS |
|--|---|
| No oil is diffused | Make sure the power is on. Pump may be damaged. |
| No Scent | If atomizing head is blocked, clean the device as instructed. |
| Diffuser spraying out droplets of liquid | LX500 is tilted or the spray head may be damaged. |
| Spillage | Fragrance bottle is loose. |
| Noise | Pump is loose. |

When you refill oil, please check whether the O-ring is damaged. If it was damaged, replace it with extra O-ring.



When the unit does not diffuse any fragrance or diffuses very little fragrance, make sure the atomizing head is not blocked.



CLEANING THE LX500

- After cleaning, turn off the LX500.
- Take out the fragrance bottle again, and replace with your new Brilliant Scents fragrance oil.