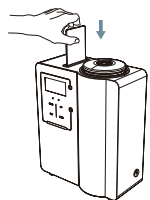
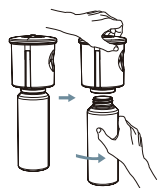


LX1200v2 Luxury Scenting System - User Manual

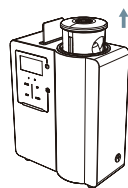
01 INSTALLATION



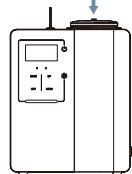
STEP 1: take out the word "essential" (with oil bottle attached)



STEP 3: Unscrew the oil bottle in the direction of the arrow. Add your Brilliant Scents fragrance oil and put it back into the atomizer head counterclockwise



STEP 2 : Press down on the atomizer head and pull it out when it pops up



STEP 4: is good leave it alone as it is

02 PRODUCT SPECS

- Size: 7.4"×3.7"×9.7"
- Weight: 4.84LBS
- Voltage: DC12V
- Capacity: 200mL
- Power: 3.5W
- Coverage: Up to. 1, 200 Sq. Ft

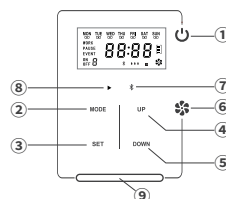
03 PACKING

LX1200 V2 × 1, Power adapter × 1, Silicone Fluorine Rubber Gasket × 1, Atomization core × 1, Magnetic card × 1, User Manual× 1

04 BUTTON/INDICATOR FUNCTION DESCRIPTION

Button Illustration:

- ① Power button: This can turn the diffuser on or off and also pause and unpaue the diffuser from operating.
- ② MODE button: This is to set the diffuser up and setup the diffusing times ie: setting up events and density. If held down for 5 seconds until it beeps and vibrates, this will restore the original factory settings.
- ③ SET button: this is to program the time on the diffuser along with the day of the week. Pressing the SET button once will allow you to change the current HOUR, pressing set the second time will allow you to change the current MINUTES, pressing set the third time will allow you to change the current day of the week. To change the hour, minutes, day of week please use the Up/Down buttons. The SET button can also LOCK and UNLOCK your diffuser by holding it down for 3 seconds.
- ④ UP button: increase any settings value.
- ⑤ DOWN button: Decrease a settings value.
- ⑥ Fan button: If while your diffuser is diffusing you wish to make the fragrance dispense faster, you can press the FAN button to turn the fan on and press it again to turn the fan off.



Indicator light status description:

- ① Power indicator: green light means the diffuser is operating, red light means the diffuser off
- ② Bluetooth indicator: Bluetooth connection, the blue light flashes, and the buzzer will prompt two sounds
- ③ Diffuser operating indicator: green light flashes when the diffuser is running, when the diffuser isn't running the binging green light turns off.
- ④ Oil level display light:
GREEN is full of fragrance
YELLOW is half full of fragrance
RED is low or empty of fragrance

**When the button light is off, press any button to make it light up before setting.

05 SETTING UP THE TIME ON THE DIFFUSER (THIS SYSTEM RUNS ON MILITARY 24 HOUR TIME)

Press [SET] once until the HOUR flashes, then press [UP/DOWN] to adjust the hour.

Press [SET] twice until the minutes flash to adjust the current minutes, then press [UP/DOWN] to adjust the minutes.

Press [SET] for the third time to adjust the day of the week. The day will flash, then press [UP/DOWN] to adjust the current day of the week.

Press [SET] for the fourth time to get back to the home screen with the current time displayed and you're finished.

06 WORKING MODE(S) AND SETTING UP EVENTS (GROUPS OF HOURS THE DIFFUSER OPERATES)

1. Press the MODE button once:

The LCD screen will display the current time. You can program up to 5 working periods (e.g., 8:00-10:00, 11:00-12:00, 13:00-14:00). Time periods can extend past midnight (e.g., 08:00-23:59 and 00:01-06:00).

2. Set Diffuser Start Time:

- Press the SET button to enter the start time setting for the first event.
- The hour will flash. Use the UP/DOWN buttons to adjust the hour.
- Press SET again to adjust the minutes. The minutes will flash; use UP/DOWN to set the minute.
- Press SET a third time to move to the day selection if you are programming a specific EVENT to only operate differently for that day of the week, otherwise if everyday will have the same schedule the day of the week does not need to be adjusted. If changing the day of the week then use UP to select days of the week (indicated by "▲" on the screen).

3. Set Diffuser End Time:

- Press the MODE button again to set the end time for the first event.
- The hour will flash. Use the UP/DOWN buttons to adjust the hour.
- Press SET to adjust the minutes. Use UP/DOWN to set the minute.

4. Set Turn-On Duration:

- Press MODE a third time to set the density of the fragrance for the LX1200 V2.

- Use UP/DOWN to adjust the duration, from 5 to 200 seconds (the lower the seconds the lighter the scent will be, the higher the number of seconds the stronger the scent will be).

5. Set Pause Duration:

- Press MODE a fourth time to set the pause duration.
- Use UP/DOWN to adjust the duration, from 20 to 200 seconds (the higher the seconds the lighter the scent will be, the lower the number of seconds the stronger the scent will be).

07 BLUETOOTH SETTING

Scan the QR code to download and install the "Scent Tech" app. After installing, open the app and complete the beginner's guide. Then, select Bluetooth mode to access the home page. The app will display any available Bluetooth devices within range that are plugged in. Simply click on the desired device to access its status page.



(APP download)

- 1. Status Window:** Displays the current mode and status, including time, day of the week, Bluetooth connection, and more.
- 2. Running Status:** You can use your phone to turn the device on or off, control the fan, and lock or unlock the device with a single click.
- 3. Working Mode:**
 - Shows the current working mode. Click the mode column to access settings where you can configure up to 5 working events.
 - Week Setting: Customize the days the device will operate.
 - Time Period Setting: Set the time periods for fragrance dispersal.
 - Note: Time periods cannot span across midnight in one setting. If needed, set two consecutive events (e.g., 23:00-23:59 and 00:00-02:00).
 - Working Frequency Setting: Adjust the fragrance concentration by controlling how often it is dispersed.
- 4. Device Address:** Once the device is connected to a network, it will display its network address.
- 5. More Options:** Click the upper right corner to rename the device.

08 MAINTENANCE

If your LX1200 V2 hasn't been used for a while, we recommend using our KEEP IT CLEAN solution to clean the internal mechanism of the diffuser.

How to Use KEEP IT CLEAN:

1. Pour the KEEP IT CLEAN solution halfway into the empty diffuser bottle.
2. Turn on your LX1200 V2 and let it run for 10-15 minutes.
3. Turn off the device, pour out the remaining solution, then reattach the bottle and refill it with your favorite Brilliant Scents fragrance oil.

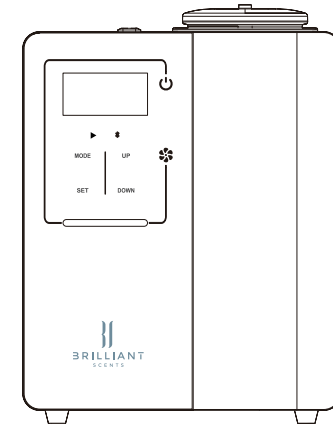
9 WARRANTY

The LX1200 System comes with a 12-month warranty covering parts and labor. This system is designed to be used exclusively with Brilliant Scents oils. Using any other oils may damage the system and will void the warranty.

IMPORTANT:

1. Avoid plugging the LX1200 into overcrowded power sockets, and do not use it with damaged wires.
2. Do not attempt to disassemble or open the LX1200. If you encounter any issues, please contact us promptly.
3. After filling the tank with oil, do not turn the LX1200 upside down or on its side, as this can cause leakage, damage the diffuser, and void the warranty.


BRILLIANT
SCENTS



LX1200 V.2

USER MANUAL